

1702 Peninsula Drive • Erie, PA 16505-4243  
 P.O. Box 8370 • Erie, PA 16505-0370  
 Ph 814/833-1154  
 FX 814/838-3473  
 E-mail: info@generalpartitions.com  
 www.generalpartitions.com

We utilize the finest quality synthetic enamel. The exclusive use of Galvanized Bonderized steel for all baked synthetic enamel ensures extended partition life. Periodic washing with mild soap and an occasional waxing with a good automotive wax will keep the finish looking new for years.

25 Wann Circle  
 Pisgah, Alabama 35765  
 Ph 256.451.1300  
 Fx 256.451.1301  
 E-mail: info@rockvillepartitions.com  
 www.rockvillepartitions.com

## STANDARD COLORS



**ALMOND**  
SW-237\*



**TAN**  
SN-548



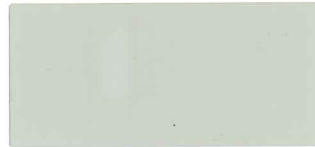
**SAND**  
SN-336



**MAUVE**  
SR-485



**ADMIRAL BLUE**  
SB-415\*



**FASHION GREY**  
SA-386\*



**CADET BLUE**  
SB-382



**HUNTER GREEN**  
SI-567\*



**BURGUNDY**  
SO-715



**MIST GREY**  
SA-401



**TERRA COTTA**  
SR-118



**RED**  
SR-455



**AUTUMN BROWN**  
SN-409



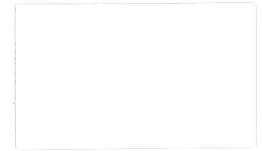
**ROYAL BEIGE**  
SN-248



**TEAL**  
SI-575

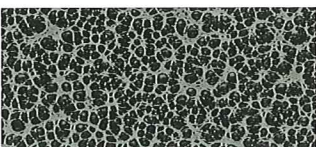


**BLACK**  
E-36



**WHITE**  
SW-20A

## TEXTURED COLORS



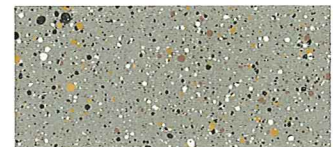
**SILVER VEIN**  
SV 936



**WHITE VEIN**  
WV-852



**SANDSTONE**  
SS-338\*



**GREYSTONE**  
GS-403

All orders include choice of 2 standard colors at no extra charge.  
 Orders over 15 compartments: 3 standard colors at no extra charge.  
 Orders over 20 compartments: 4 standard colors at no extra charge.  
 Extra color charge, \$50.00 for each color exceeding the color per compartment limit.

For special powder coating color match, add \$1000.00 per color.

Actual colors and/or textures may vary from those shown due to limitations of the production process. Please request actual sample for absolute color fidelity.

\*Indicates colors available on express shipment.